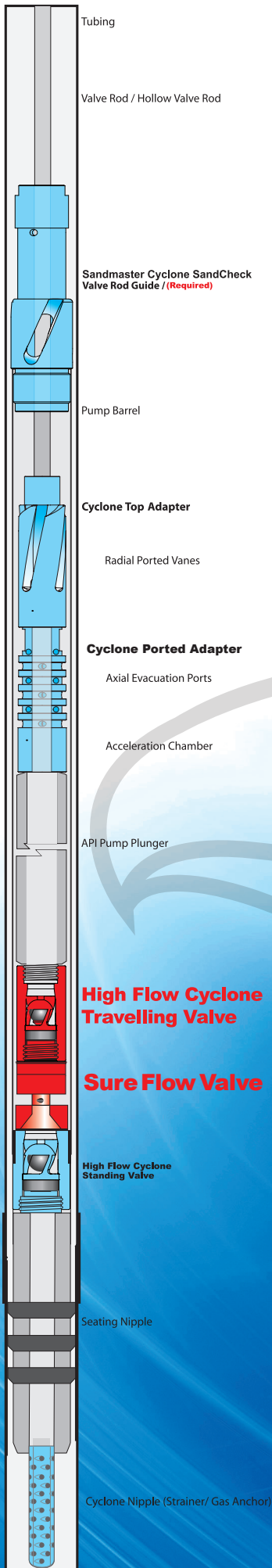


## THE EAGLE SURE FLOW VALVE

The **Eagle Sure-Flow Valve** was designed to assist the traveling valve in gassy and dirty conditions. When a ball is stuck or prohibited from unseating, this **patented** feature will allow the ball to be unseated by a stem cradle. This stem will hydraulically force the ball off the seat. The cradle maintains control without impinging the ball with the cradle stem. This cycle is completed by the cradle maintaining fluid in the cavity below the ball and seat. The cycle is repeated when the stem is actuated by a full open bore drag plunger attached to the bottom assembly of the stem mechanism. The stem mechanism is designed with **patented** radial ports to allow heavy or high solids fluids to pass thru the valve eliminating concerns of sticking or premature wear. The radial design self-cleans the stem mechanism of debris with no interruption in the stem action. The Sure-Flow Valve's Radial Stem design facilitates greater fluid flow thru the valve by a positive open on each stroke.



**Material Construction:**  
316 Stainless Steel

**US and Canada Patents**  
**World Wide Patents Pending**

### BENEFITS INCLUDE:

INCREASED PUMP EFFICIENCY

INCREASED BALL LIFE

INCREASED SEAT LIFE

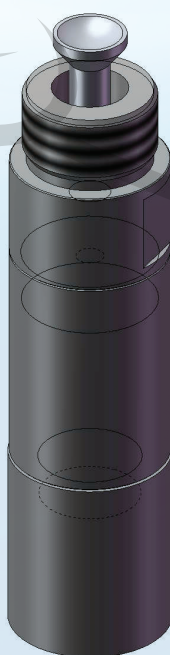
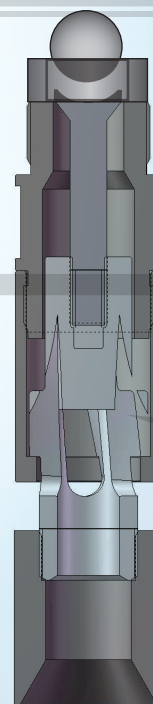
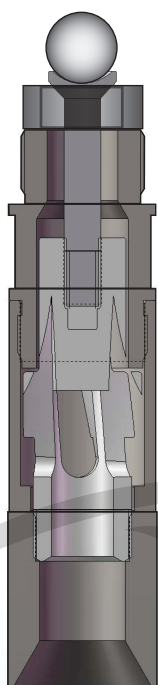
INCREASED CAGE LIFE

INCREASED PRODUCTION

DECREASED GAS LOCK

# THE EAGLE SURE FLOW VALVE

©



**Material Construction:**  
**316 Stainless Steel**

**US and Canada Patents**  
**World Wide Patents Pending**



©

**Eagle Innovations Incorporated**

175 West 900 South #7  
St. George, UT 84770

Ph: 435-656-0505  
Fax: 435-628-9069

[www.eagleinnovations.net](http://www.eagleinnovations.net)